

INDEX

1

- | | | |
|-------------------------------------|-----------------------------|--|
| 1 Index | 7 Game Screen | 12.13 RAID MODE / The Vestibule |
| 2 About This Game | 8 Status Screen | 14 Character Select & Skills |
| 3 Main Menu | 9 Workstation | 15 Item Evaluation & Weapon Upgrading |
| 4 Campaign | 10 Partner Character | 16 Options / Resident Evil.Net |
| 5 Controls | 11 Skills | |
| 6 Combat and Special Actions | | |

"PS", "PlayStation", "PS3", "PSN", "DUALSHOCK" and "SIXAXIS" are registered trademarks or trademarks of Sony Computer Entertainment Inc. "Sony Entertainment Network" is a trademark of Sony Corporation. "XMB" and "XrossMediaBar" are trademarks of Sony Corporation and Sony Computer Entertainment Inc. Library programs ©Sony Computer Entertainment Inc. "PS" ©1994 Sony Computer Entertainment Inc.

★ Online features will be added with title update.



Dolby and the double-D symbol are trademarks of Dolby Laboratories.

ABOUT THIS GAME

2

Main Content

Essential Game Pack

Episode 1 Pack

Ep.1 Campaign



Raid Mode

This game is divided up into several episodes and content packs, which can be purchased separately.

Add-Ons

Can be purchased in any order

Episode 2 Pack

Ep.2 Campaign

Claire Barry

Raid Mode Add-Ons
(Stages, Items)

Episode 3 Pack

Ep.3 Campaign

Claire Barry

Raid Mode Add-Ons
(Stages, Items)

Episode 4 Pack

Ep.4 Campaign

Claire Barry

Raid Mode Add-Ons
(Stages, Items)

Save Data

At least 3,000KB of free space is required to save game data to your PlayStation®3 system. Do not turn off your PlayStation®3 system while the game is saving, as this may result in corrupted save data.

This game is compatible with Dolby®Digital 5.1 surround sound. Connect your PlayStation®3 system to a sound system with Dolby Digital technology using an HDMI cable or digital optical cable. From the XMB™ (XrossMediaBar), choose settings → Sound Settings → Audio Output Settings, select the connected cable type, then select Dolby Digital 5.1 Ch. to experience the excitement of surround sound.

MAIN MENU

3



Campaign The campaigns take place over two different time periods.

Raid Mode Take on enemies while upgrading your equipment. You can play 2-player co-op through an internet connection. ★

Extras View records and unlocked bonus content.

PlayStation®Store Sign in to "PSN" to download add-ons.

Rankings Check out the online rankings.

Manual View the manual.

Options Change the game's options and settings.



Save Data

This game features an auto-save function. Please avoid turning off the power while the save icon is displayed. The game will auto-save at episode checkpoints and at the result screen. There is only one save file for the whole game, including add-ons.

CAMPAIGN

4

Choose Campaign from the Main Menu, then select the episode you want to play.

Campaign Menu

Continue Continue from your last saved checkpoint.

Episode Select Choose from either Claire or Barry's campaign and start the game.

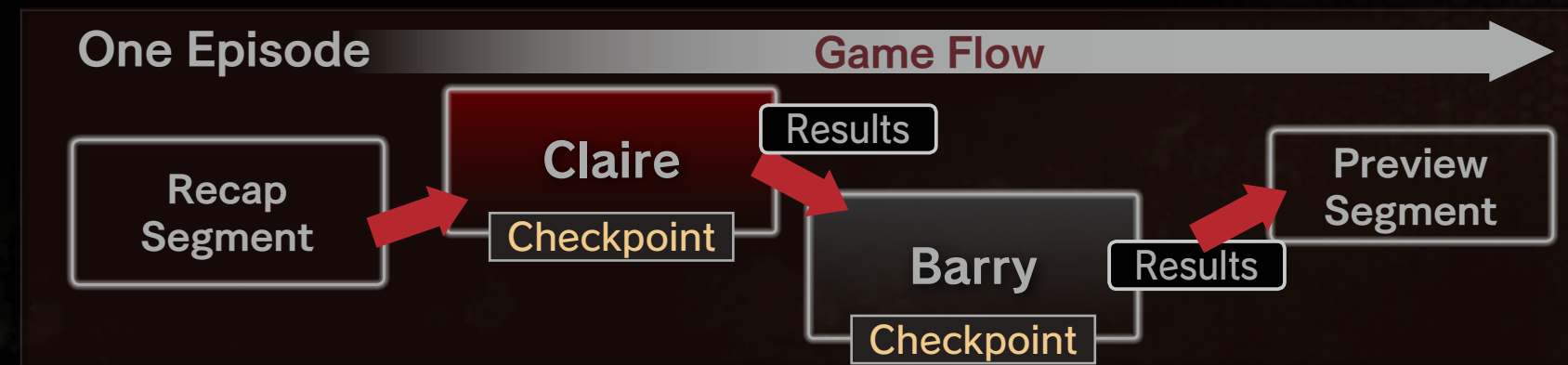
Game Settings

Start Game Begin the game.

Co-Op Play Play offline co-op using a split-screen.

Campaign Flow

Things you do in Claire's campaign will affect Barry's campaign. Items you have when you finish an episode will carry over for the same character when you resume that campaign.



CONTROLS

These are the default controls. The control scheme can be changed from Options (pg 16).

L2 button
Hold Down - Aim Sub-Weapon
R1 button to throw

L1 button
Ready Weapon

Directional buttons
↔ / ⇄ / ↑ / ↓
Switch Weapon
(Press with L2 button to Switch Sub-Weapon)

Left stick
Move

L3 button
Crouch / Stand

Right stick
Move Camera

R3 button
Light On / Off
Adjust Scope

Status Screen
SELECT button

Pause Menu
START button

R2 button
Hold Down to Use Herbs

R1 button
Melee Attack
While Aiming - Fire

Menu Screen Controls
O button
Cancel

X button
Confirm

△ button
Switch Character
Hold + up button/down button to give commands*

□ button
Pick Up / Reload

○ button
Push together with a direction on the left stick to evade

X button
Examine / Perform Action
Hold down while walking to run
Perform quick turn (moving backwards)

This game supports the wireless controller's vibration function.
 Hold down the PS button to turn it on or off in the menu that appears.
 * In Raid Mode, use the directional buttons, L2 button, and R2 button to use gestures or call to your partner.

COMBAT AND SPECIAL ACTIONS

6



Shooting

L1 button + R1 button

Ready your weapon with L1 button, use the right stick to aim, and press R1 button to fire.



Sub-Weapon

L2 button + R1 button

Hold down the L2 button to ready your sub-weapon, and press the R1 button to throw it. Use the L2 button and the directional buttons to change sub-weapons.



Physical Attack

R1 button, close to wounded enemy

When a wounded enemy is in close range you can use a physical attack to send them flying.



Evasion

Left stick + O button

Use to dodge enemy attacks quickly.



Stealth Attack

Approach an enemy from behind unnoticed and press the R1 button.

Crouch to avoid making noise, and stay out of your enemy's eyesight to take them out in one attack.

Recovery and Impairment



Recovery

Hold down R2 button

Use herbs to recover your health. Taking too much damage will result in death.



Impairment

Enemies can inflict impairments on you, including bleeding and blindness. Impairments will go away over time, or you can use items to recovery instantly.

GAME SCREEN

7

Aiming

A map is displayed in the upper right corner. The following HUD will appear while aiming.



Pause Menu

Press the START button to bring up the Pause Menu during gameplay.



- Resume** Return to the game.
- Retry** Restart from your last saved checkpoint.
- Gameplay Stats** View your results and challenge medals.
- Documents** View the files that have been collected in-game.
- Split Screen** Play 2-player co-op using a split-screen.
Cannot be used during online play in Raid Mode. ★
- Options** Open the option menu.
- Quit** Return to the Main Menu.

STATUS SCREEN

8

View your items, change the order of your weapons, and combine items. Press the SELECT button to open during gameplay, and toggle screens using the L1 button and R1 button.



Item Screen

Access the items your character and the partner character are carrying. You can pass items to your partner if they are within reach. Discarded items can also be picked up again if they are in range.



Combination Screen

View this screen to see items you can combine. Create the new items you want to make while confirming what items types you need, and how much is necessary.



Weapon Slot Screen

Select the weapon placement for the directional buttons in the Quick Menu.

WORKSTATION

9

Use the workstation in game to switch your weapons and customize their performance using custom parts. Any custom parts in your item inventory will be opened, transferred, and saved to the workstation per character.



Weapon Switching

A character can hold up to 4 weapons at a time. Store extra weapons at the workbench and access them as desired.



Customization

You can improve weapon performance by installing custom parts. Choose the weapon you want to customize and install the custom parts into the open slots.

PARTNER CHARACTER

10

A partner character will travel together with the main character. Switch characters by pressing the \triangle button (single-player mode only). Use the partner's special abilities to solve puzzles and clear difficult obstacles.

Partner's Abilities

The partner characters have different equipment and abilities. If they sustain enough damage they will become immobilized. They can recover if you hold down the \triangle button near them using the main character.

- ※ There are certain traps that will result in a game over if the main or partner character gets caught in them.
- ※ Partner characters can find hidden items.

Moira



Equipment

Crowbar, flashlight

Abilities

Her flashlight illuminates dark areas. Use aiming to concentrate the beam on a smaller area to find hidden items and to blind certain enemies temporarily.

Natalia



Equipment

None

Abilities

Natalia can sense the presence and weak spots of enemies. Crouch to increase her sensing range. Pointing reveals hidden items in dark areas, and shows Barry the enemies' weak spots during split-screen play.

Acquire skills to improve your abilities. Skill Settings can be accessed from the Campaign menu. Skills can be obtained using bonus points, which are earned after finishing an episode.



Acquiring Skills & Leveling Up

Skill Settings displays all the skills you can acquire. Use the cursor to choose a skill. Only skills you acquire can be leveled up.

Raid Mode

12

Overview



In Raid Mode you move forward while defeating waves of enemies. Obtain Medallions by clearing missions, and use these Medallions to unlock new missions. You can play Raid Mode in single player, as well as co-op offline using split-screen, and together with players globally through online play. ★

Each mission has its own clear conditions. Fulfill these conditions and the goal emblem will appear. Destroy it to clear the mission. You can get experience and gold based on your performance. Upgrade your weapons and parts to help improve your performance.

Raid Mode

13

The Vestibule



You'll start Raid Mode from the Vestibule. You'll be able to adjust various settings as you prepare to take on the mission.

- Mannequin • Change or edit your characters and skills.
- Workstation • Swap and improve your equipped weapons.
- Black Phone • Buy or sell items, and access the PlayStation®Store.
- Jukebox • Play the albums to unlock items.
- Toolbox • Combine custom parts.
- Bulletin Board • View the online rankings.
- Book • View the play manual.
- Gramophone • Listen to the mysterious voice.
- Chair • Exit Raid Mode.
- ★ Blue Door • Connect online to find and add partners. Follow the instructions that will be displayed on-screen.
- Red Door • Choose the mission you'd like to start.

CHARACTER SELECT & SKILLS

14

Raid Mode features mode-exclusive equipment, characters, and skills. These can be accessed from the mannequin. Characters have their own skills and abilities, and level up separately. Use experience bonuses that increase over real time, and skill progression to level up your character to its full potential.



Mannequin

Choose your character from the displayed line-up of playable characters.

Weapons Choose the weapons you'll use in the mission.

Skills Acquire, strengthen, inherit and equip skills.

Gestures Adjust the gestures you'll use in-game.

Finish Customization Adjust settings for the character you will use for the mission.

Rest Bonus

An experience bonus that your character gains while not in use. You can gain a lot of experience from the rest bonus. This content is only available online.

Passive and Active Skills

Passive skills activate when certain conditions are met. Active skills can be equipped similar to a sub-weapon and used with the L2 button.

Skill Limitations

Many skills require a cool-down period before they can be used again. Other skills can only be used a limited number of times.

ITEM EVALUATION & WEAPON UPGRADING

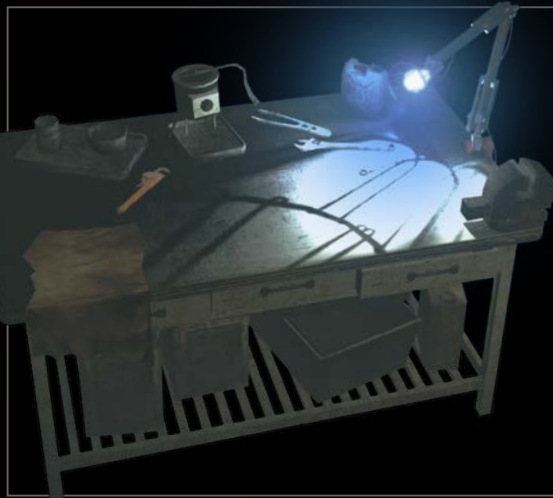
15

Use custom parts slots to alter or level up weapons. You can obtain albums (non-evaluated items) during a mission, but you will not be able to use them until you evaluate them using the jukebox in the Vestibule. They can also be purchased from the store using the black phone.



Jukebox

You must have gold to use the jukebox, and there is a limit on the amount of albums you can have. You can check the item based on the icon, and choose to evaluate it or sell it for gold.



Workstation

View the weapons you have and perform the following operations. Discarded weapons and parts cannot be re-obtained.

Equip Parts Equip custom parts to your weapon. Equipped parts cannot be removed.

Destroy Parts Destroy the custom parts attached to your weapon to open the parts slot.

Destroy Weapon Destroy the weapon to retrieve the equipped custom parts.

Sell Sell weapons and equipped custom parts.

Options Menu

Adjust various settings here.



Controls Change the control type and camera.

Display Adjust screen brightness, on-screen display, subtitles, and toggle the tutorial on or off.

Audio Set voice listening mode, volume, and toggle the voice chat on or off.

Language Change the subtitle and voice settings.

RE NET Data upload to RE NET can be set to on or off. ★

Default Restore all settings to their default values.

RESIDENT EVIL.NET

RESIDENT EVIL.NET

RE NET is a free web service to help expand the world of Resident Evil Revelations 2. By uploading your player data to the server you can view your game progress, participate in regular events, and receive useful items. Signing up is easy! Access the URL below from your PC or smartphone and register your email address. Follow the link in the confirmation email we'll send and choose your nickname and password. That's all it takes to sign up! Log in to RE NET and link to your Sony Entertainment Network account to start using all of the site's services.

Sign up today!

<http://www.residentevil.net>

Please use an email address that can receive mail from capcom.com.