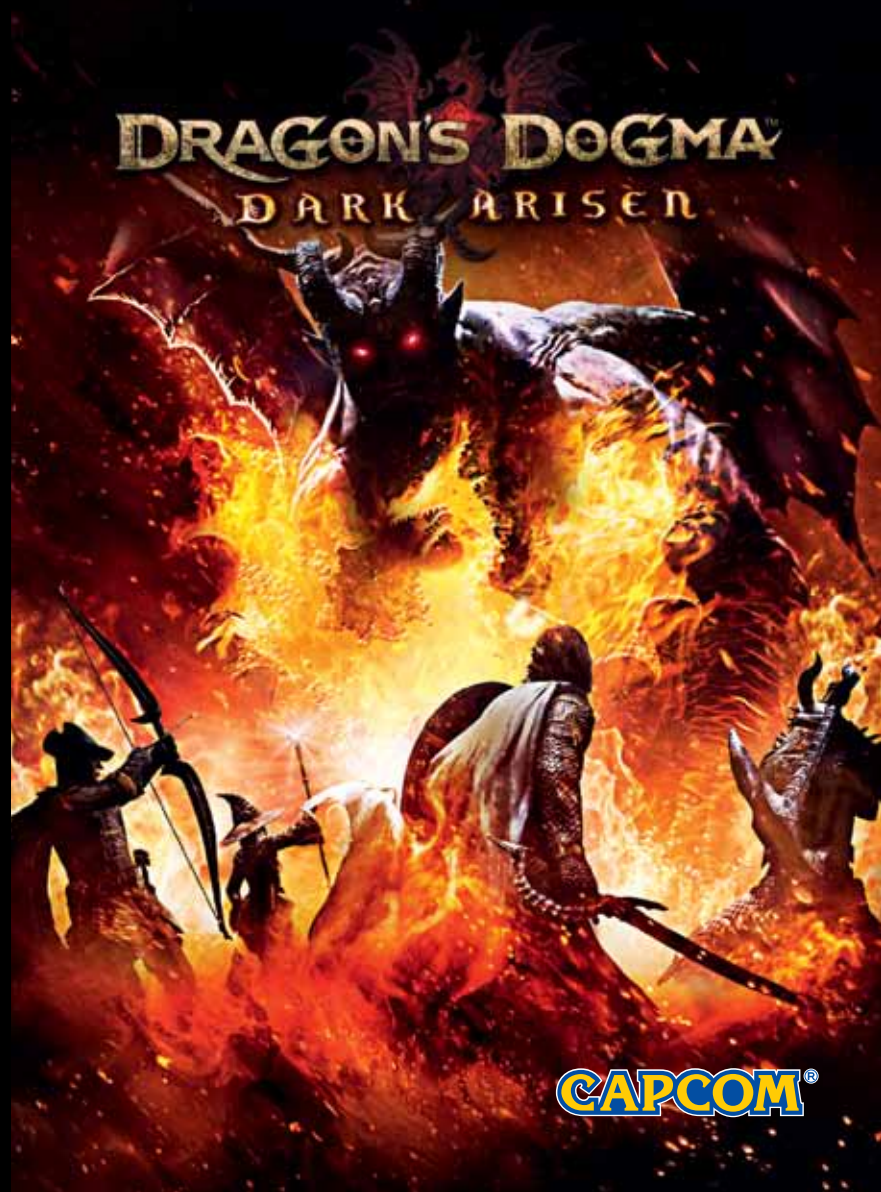




www.capcom-unity.com

REGISTER FOR EXCLUSIVE OFFERS & NEWS
REG.CAPCOM.COM

©CAPCOM CO., LTD. 2012, 2013 ALL RIGHTS RESERVED.



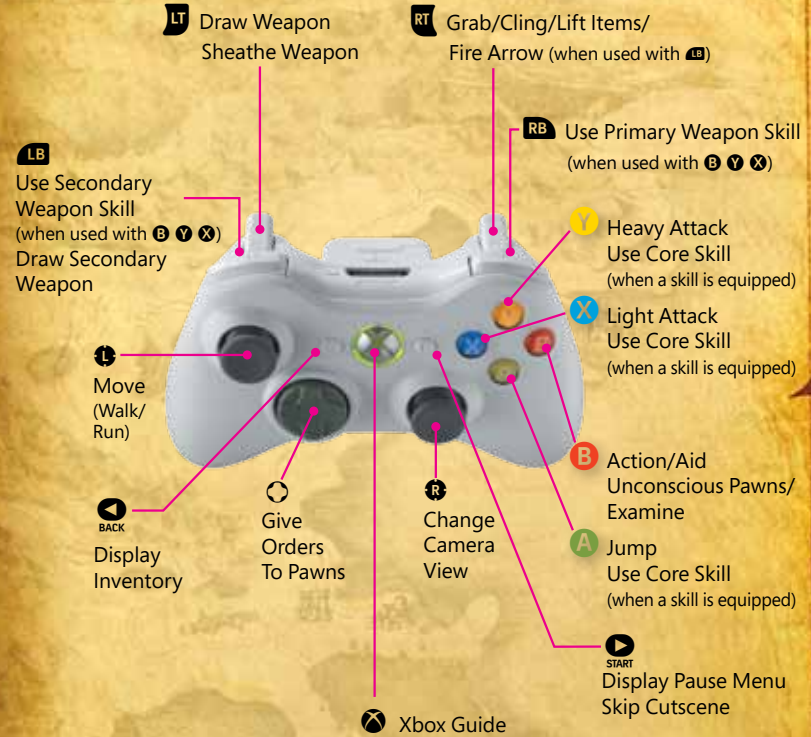
CAPCOM®

WARNING Before playing this game, read the Xbox 360® console, Xbox 360 Kinect® Sensor, and accessory manuals for important safety and health information. www.xbox.com/support.

Important Health Warning: Photosensitive Seizures

A very small percentage of people may experience a seizure when exposed to certain visual images, including flashing lights or patterns that may appear in video games. Even people with no history of seizures or epilepsy may have an undiagnosed condition that can cause "photosensitive epileptic seizures" while watching video games. Symptoms can include light-headedness, altered vision, eye or face twitching, jerking or shaking of arms or legs, disorientation, confusion, momentary loss of awareness, and loss of consciousness or convulsions that can lead to injury from falling down or striking nearby objects. **Immediately stop playing and consult a doctor if you experience any of these symptoms.** Parents, watch for or ask children about these symptoms—children and teenagers are more likely to experience these seizures. The risk may be reduced by being farther from the screen; using a smaller screen; playing in a well-lit room, and not playing when drowsy or fatigued. If you or any relatives have a history of seizures or epilepsy, consult a doctor before playing.

Xbox 360 Controller



ABOUT DISC 1 AND DISC 2:

Disc 1 is the primary Game Disc which will be used when playing the main game. Disc 2 comes with both a high-res texture pack, as well as the Japanese Voice over pack. Installing both is optional, though installing the HD texture pack is strongly recommended. To install, simply insert Disc 2 into your Xbox 360 and follow the on screen prompts. Once installed, eject Disc 2 and replace with Disc 1 to begin your game.

90-DAY LIMITED WARRANTY

CAPCOM U.S.A., INC. ("CAPCOM") warrants to the original consumer that this game disc from CAPCOM shall be free from defects in material and workmanship for a period of 90 days from date of purchase. If a defect covered by this warranty occurs during this 90-day warranty period, CAPCOM will repair or replace the game disc at its option free of charge. This warranty shall not apply if the game disc has been damaged by negligence, accident, unreasonable use, modification, tampering or by other causes unrelated to defective materials or workmanship.

To receive this warranty service and contact Product Support:

1. Notify the CAPCOM Consumer Service Department of the problem requiring warranty service by calling (650) 350-6700. Our Consumer Service Department hours are 8:30 a.m. to 5:00 p.m. Pacific Time, Monday through Friday or please visit shop.capcom.com and click the Support tab at the top of the page.
2. If the CAPCOM service technician is unable to solve the problem by phone, he/she will instruct you to return the game disc to CAPCOM freight prepaid at your own risk of damage or delivery. We recommend sending your game disc certified mail. Please include your sales slip or similar proof of purchase within the 90-day warranty period to:

CAPCOM U.S.A., INC. Consumer Service Department
800 Concar Drive, Suite 300, San Mateo, CA 94402-7045 U.S.A.

WARRANTY LIMITATIONS

THIS WARRANTY IS IN LIEU OF ALL OTHER EXPRESS OR IMPLIED WARRANTIES, INCLUDING WARRANTIES OF MERCHANTABILITY AND FITNESS FOR A PARTICULAR PURPOSE. IN NO EVENT SHALL CAPCOM, ITS AFFILIATES AND LICENSEES BE LIABLE FOR SPECIAL, INDIRECT, CONSEQUENTIAL OR INCIDENTAL DAMAGES RESULTING FROM THE BREACH OF ANY EXPRESS OR IMPLIED WARRANTIES

The provisions of this warranty are valid in the United States and Canada only. Some states and provinces do not allow limitations on how long an implied warranty lasts or exclusions of consequential or incidental damages, so the above limitations and exclusions may not apply to you. In such jurisdictions, CAPCOM'S liability shall be limited to the fullest extent permitted by law.